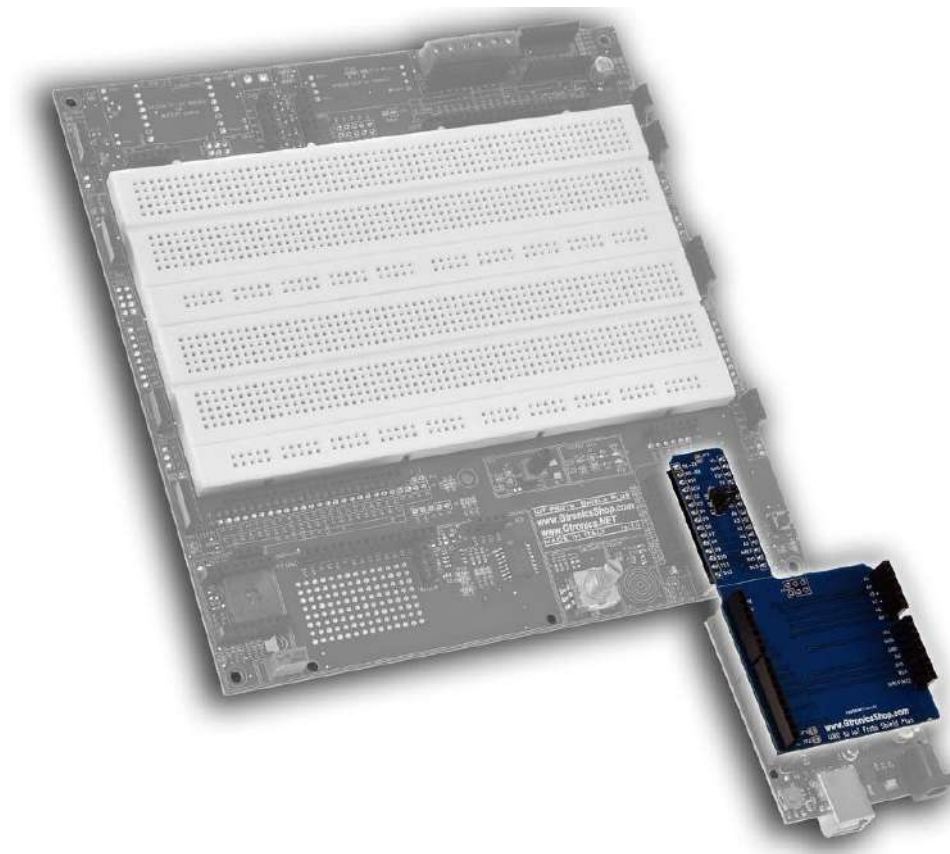

UNO TO IOT PROTO SHIELD PLUS ADAPTER (VER. 1.0) USER MANUAL



INDEX

1.	Introduction and technical specifications	2
2.	Assembling the UNO2IoTSP	2
3.	The UNO2IoTSP schematic design	3
4.	Working with the UNO2IoTSP adapter	4
4.1.	Important note about A6 and A7 pins	5

NOTE:

Some pictures contained in this manual, may be different from the board revision in your hands (at time of writing the current version is rev. 1.0), this does not affect the functionality of the board described in this manual.

1. Introduction and technical specifications

The **UNO to IoT Proto Shield Plus Adapter** (**UNO2IoTSP** from now on) is designed to let you use the **IoT PROTO SHIELD PLUS** with Arduino UNO form factor boards.

It works with:

- Any board compatible with Arduino UNO in terms of form factor, pin-out and electrical specifications (i.e. Arduino [UNO](#), [Leonardo](#), [Zero](#), [Yun](#), [UNO WiFi](#), etc.)

2. Assembling the UNO2IoTSP

The **UNO2IoTSP** consists of:

- 1x UNO2IoTSP adapter board
- 2x 8pin stackable headers
- 1x 10pin stackable header
- 1x 6pin stackable header
- 2x 1x15 single row male header
- 1x 1x3 single row male header
- 1x Header jumper

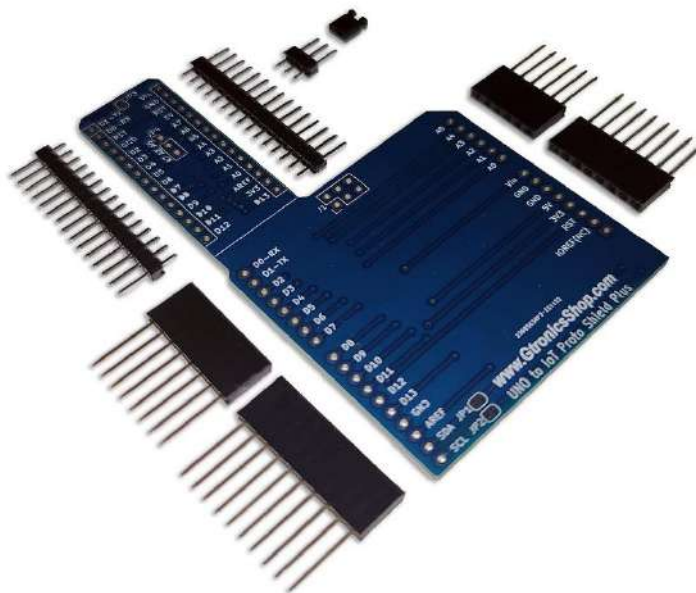


Figure 1 – The UNO2IoTSP kit

All you need to do is just to solder all the header as shown in the following image.

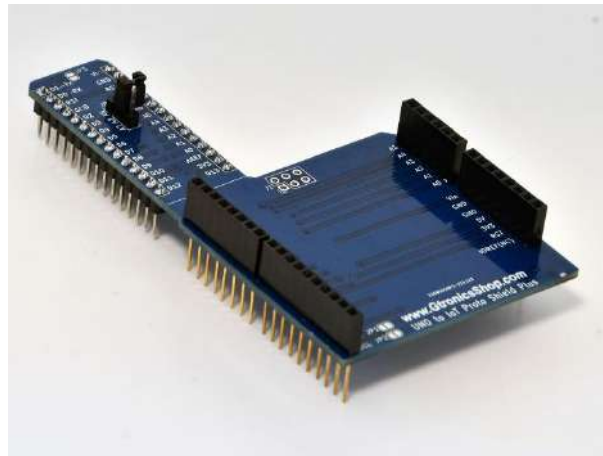


Figure 2 – Assembled UNO2IoTSP adapter

3. The UNO2IoTSP schematic design

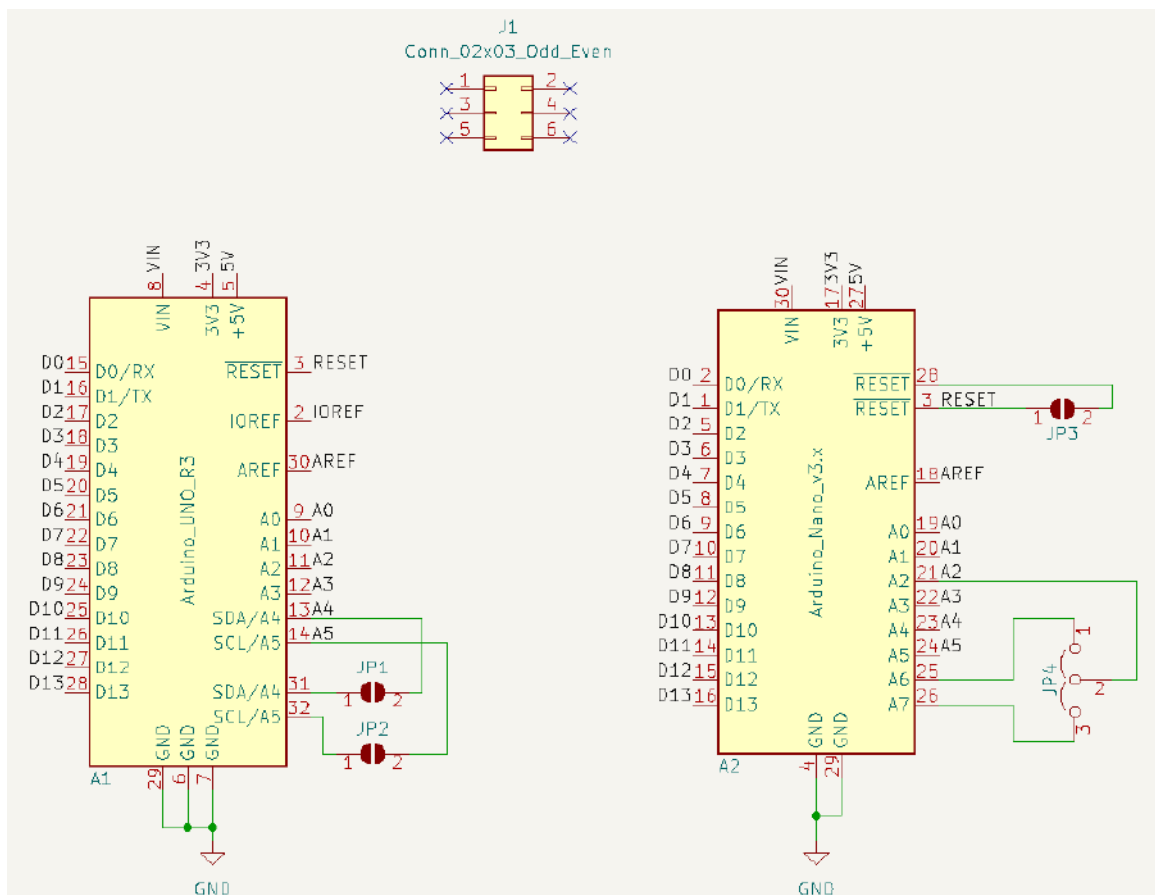


Figure 3 – The UNO2IoTSP schematic design

4. Working with the UNO2IoTSP adapter

To work with the **UNO2IoTSP** just plug the UNO from factor board into the adapter and then plug the adapter into the **NANO** socket of the **IoT PROTO SHIELD PLUS**.

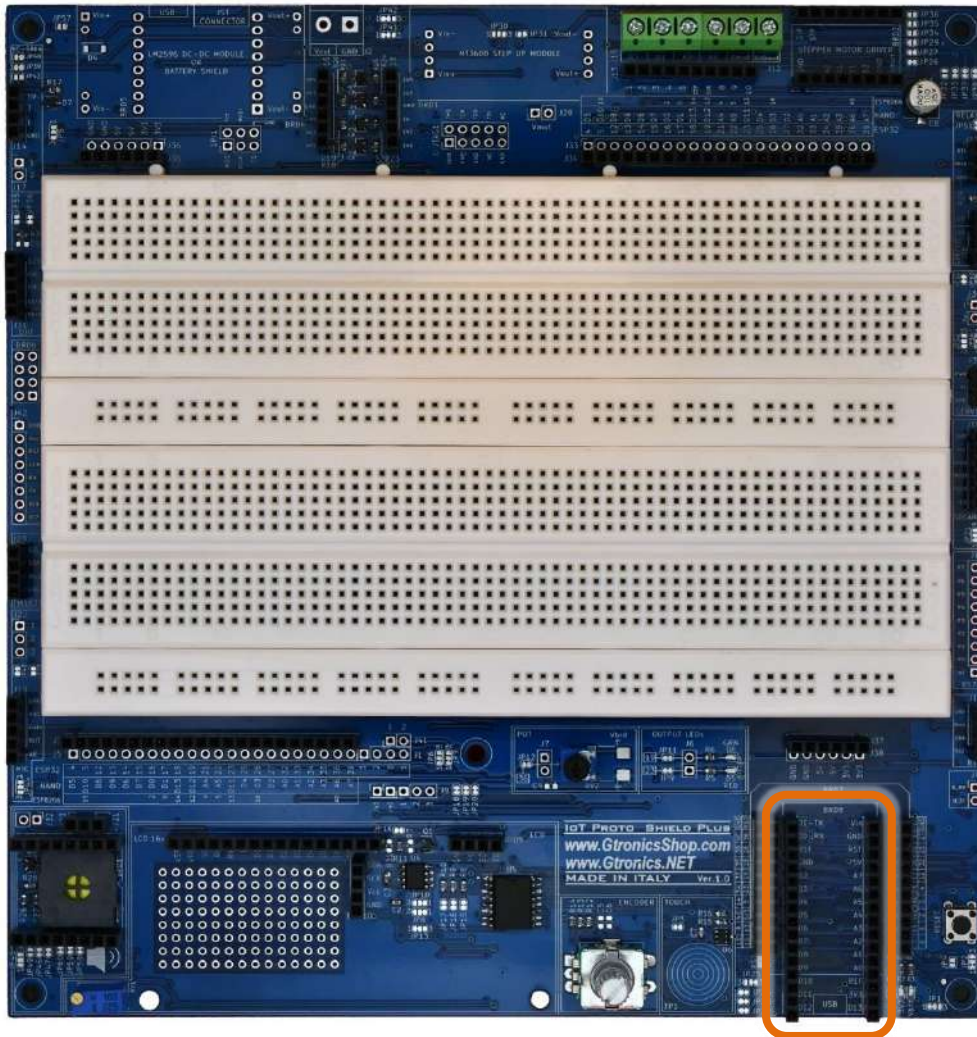


Figure 4 – The NANO socket of the IoT Proto Shield Plus

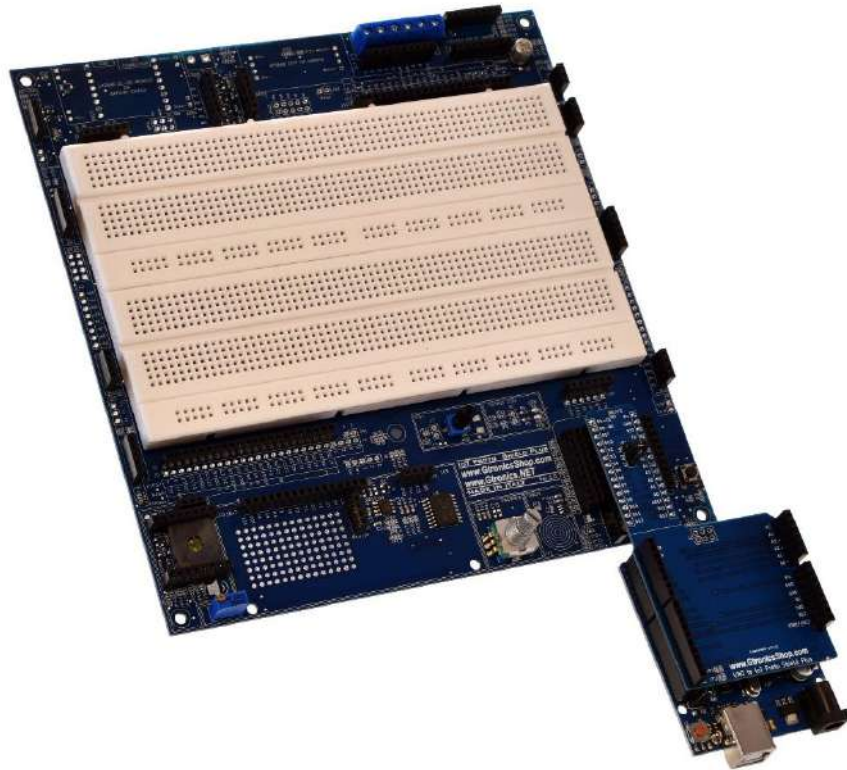


Figure 5 – An Arduino UNO board connected to the IoT Proto Shield Plus by means of the UNO2IoTSP adapter

4.1. Important note about A6 and A7 pins

It is important to consider that Arduino UNO form factor boards do not have A6 and A7 pins replicated on the standard pinout.

With **JP4** (see picture below) you can connect A6 or A7 to A2 which is a **FREE TO BE USED BY DEFAULT** labelled pin on the **IoT PROTO SHIELD PLUS** (see §8 on the IoT Proto Shield Plus User Manual).

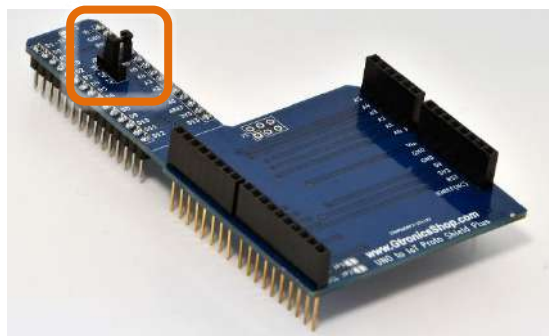


Figure 6 – JP4 of the UNO2IoTSP