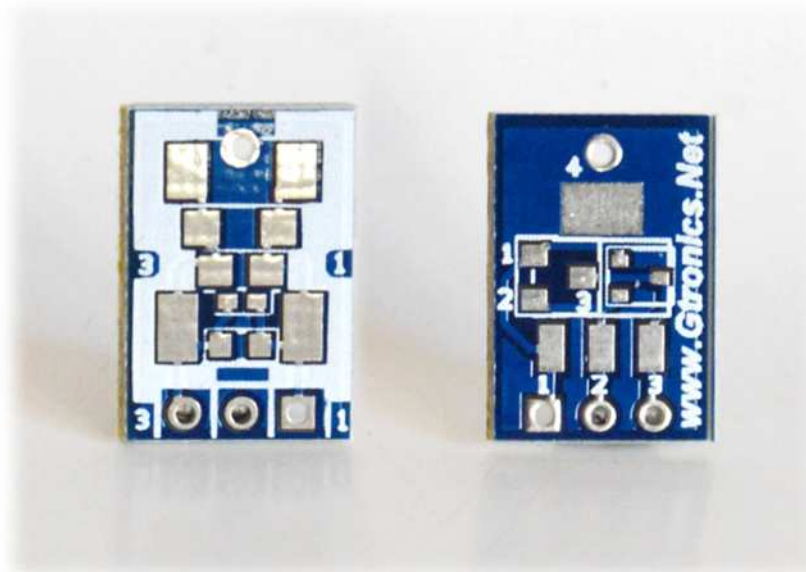


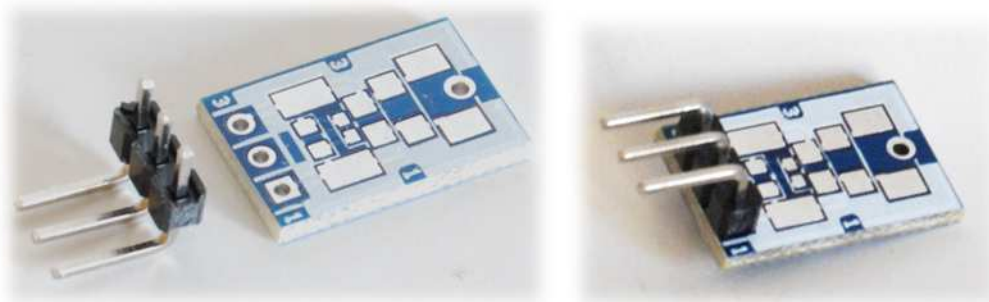
SMD TO THT ADAPTER



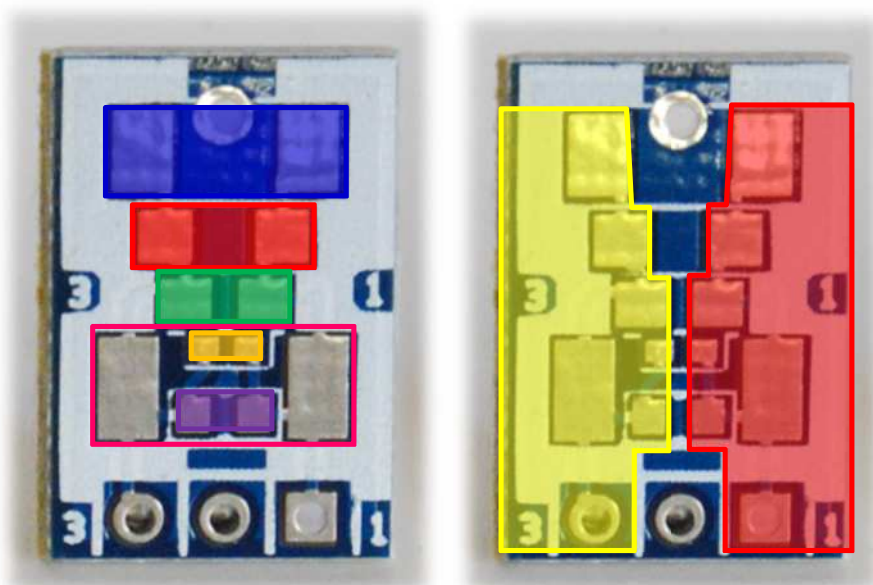
The **SMD TO THT ADAPTER** helps you when you need to use SMD devices while you are prototyping with breadboards.

The **SMD TO THT ADAPTER** comes with a 3 pins male 90° right angle header (2.54mm pitch, single row).

It's up to the end user to solder the header to the little **SMD TO THT ADAPTER** board (no special skills are required, just be familiar with soldering standard 2.54mm pitch pins).



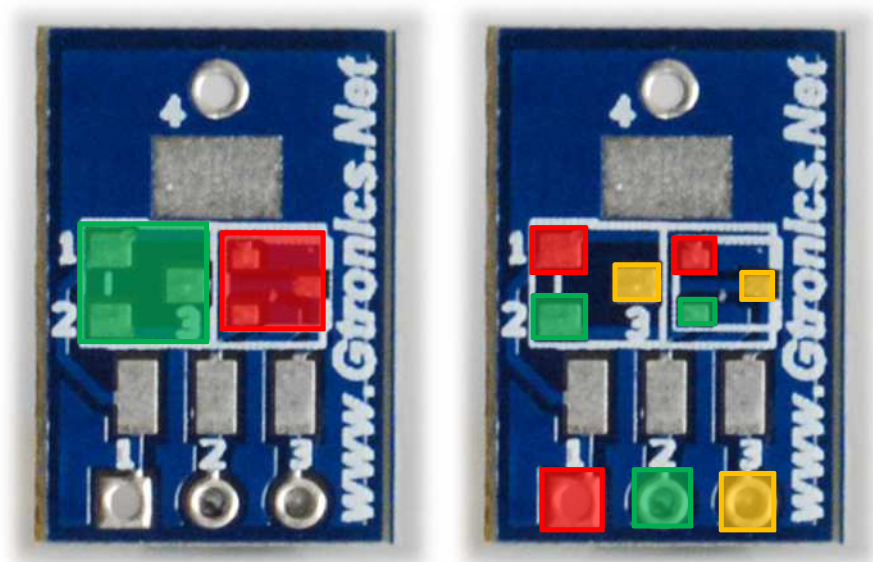
2 pin SMD PACKAGES COMPATIBILITY



0402, 0603, 0805,
1206, 2512, MELF

PIN 3 PIN 1

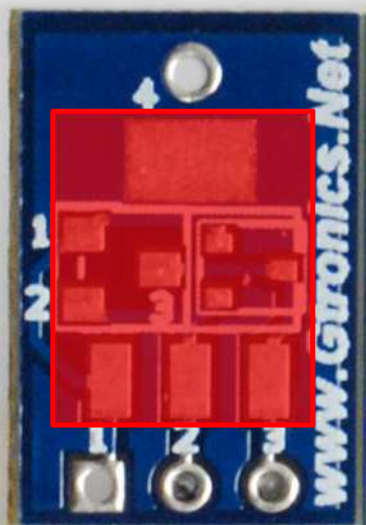
3 pin SMD PACKAGES COMPATIBILITY



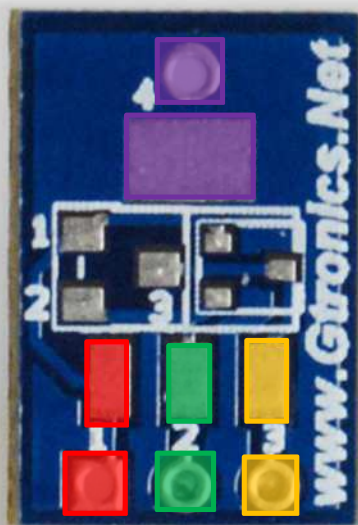
SOT23, SOT323

PIN 1 PIN 2 PIN 3

SOT223 SMD PACKAGE COMPATIBILITY



SOT223



PIN 4

PIN 1 PIN 2 PIN 3

ALTERNATIVE MOUNTING with STRAIGHT MALE HEADER

